

# 2MD6 Worksheet video 1 Name \_\_\_\_\_

Use the number line to answer the questions. Problem 1



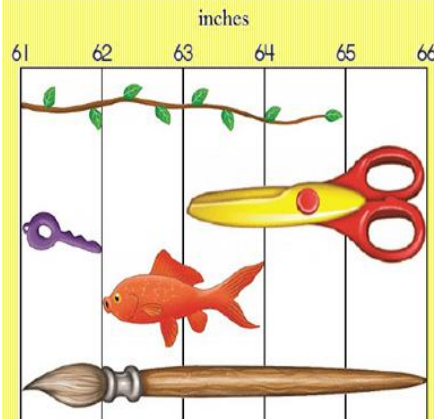
How long is the wooden spoon?

\_\_\_\_\_

How much shorter is the ticket than the jar?

- a. 4 centimeters    b. 5 centimeters
- c. 6 centimeters    d. 7 centimeters

Use the number line to answer the questions. Problem 2



How much longer is the paintbrush than the key?

\_\_\_\_\_

How much longer are the scissors than the key?

- a. 1 inch    b. 2 inches
- c. 3 inches    d. 4 inches

Use the number line to answer the questions. Problem 3

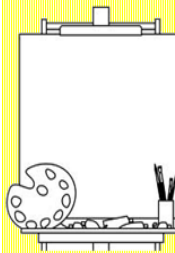
Carla's couch is 72 inches long. Her coffee table is 36 inches long. How much shorter is the coffee table than the couch?



\_\_\_\_\_

Use the number line to answer the questions. Problem 4

Ann paints a portrait that is 56 centimeters wide. Cedar paints a portrait that is 33 centimeters wide. How much wider is Anne's portrait than Cedar's portrait?



\_\_\_\_\_

